



## PLS 115 LINKING AND CUTTING LINE

For sausages in natural and collagen casing

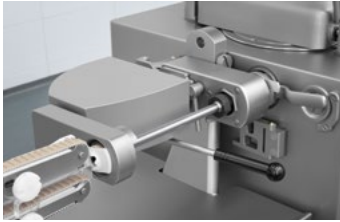
- **RATIONALISATION** due to automatic production of fresh products
- **FIRST-CLASS PRODUCT QUALITY** due to precisely separated portions with precise lengths
- **SIGNIFICANT COST REDUCTION** due to maximum weight accuracy per portion
- **FLEXIBILITY** due to separating into individual portions or strings of any length
- **WIDE VARIETY OF PRODUCTS** due to large range of applications and calibres
- **HIGH DEGREE OF FLEXIBILITY** due to short conversion times

## Automatic sausage production with the PLS 115

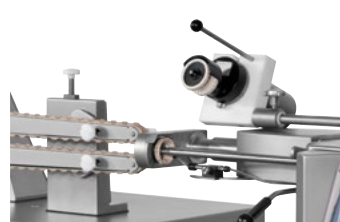
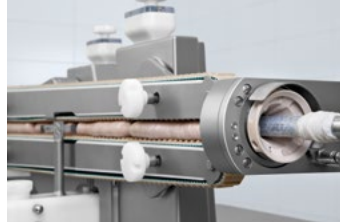
For small-scale and medium-scale producers and industrial users

The process: **Portioning and linking** - = **Equal lengths** - **Cutting**

The Handtmann vacuum filler's high-precision vane cell feed system ensures portioning accurate to the gram and constant feeding of the PLS 115. The automatic holding device with a low-wear drive and a finely-tuned, flexible casing brake (the return stroke for the 2-way casing brake pulls the linking position apart for a precise cutting result) guarantees gentle and fast linking, even with sensitive natural casings.



↑ Casing spooling with holding device and linking nozzle



↑ Casing spooling device



↑ Casing end sensor

The sausage separating principle on the belt with a synchronised blade guarantees cleanly separated portions with closed casing ends. This reliability ensures safe, uninterrupted production. Individual cutting provides scope for diversity coupled with short setup times, from fresh products to dry sausages.



↑ Separating unit with separating module



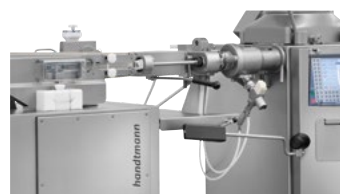
### OPTIONAL ACCESSORIES

- Integration of GD 93-3 inline grinding system
- DA 78-6 casing spooling device for spooling natural casings
- MSA machine setup assistant
- Networking with HCU software
- The PLS 115 is available as the PLSH 217 version with the additional "hanging" function and can therefore be used flexibly as a hanging or cutting line

### PERFORMANCE DATA

- Up to 1000 portions/min. in natural casing
- Natural and collagen casing cal. 13 – 34 mm
- Portion length from 40 mm

### PRODUCTS AND APPLICATIONS



↑ GD 93-3 inline grinding system



↑ PLSH 217 with hanging function

Virtual Patent Marking: [www.handtmann.com/patents-mf](http://www.handtmann.com/patents-mf)